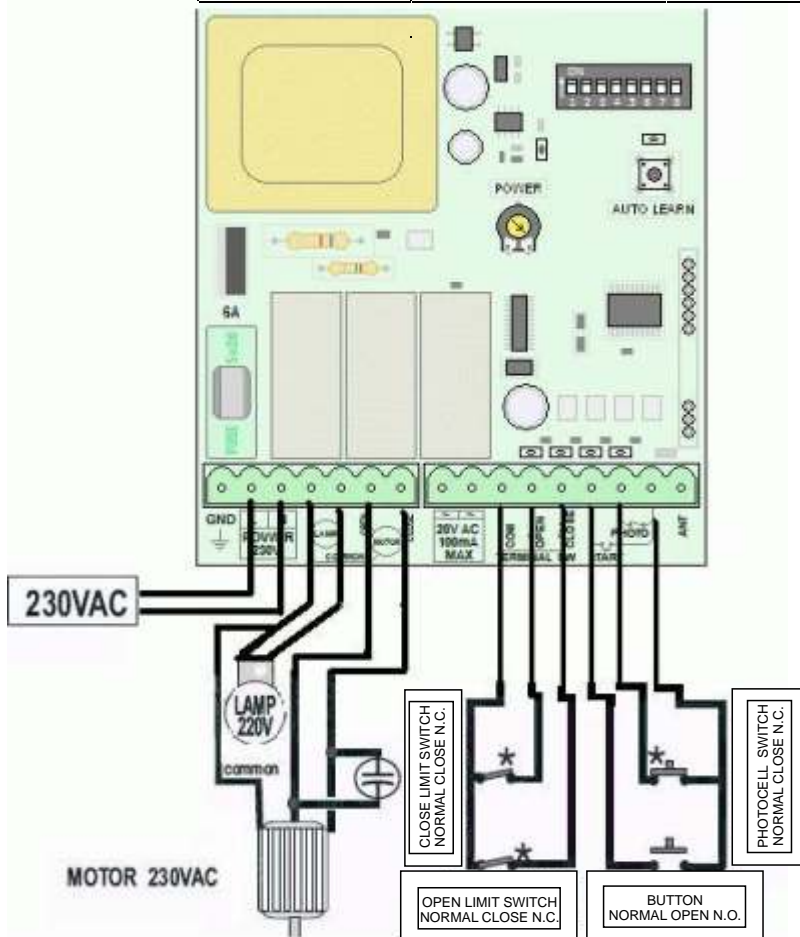


DIPSWITCH	OPERATION	DIPSWITCH	
1	/ LIGHT	OFF	FLASH
		ON	60 SEC
2 - 3	AUTO CLOSE	OFF - OFF	OXI / NO
		ON - OFF	30 SEC
		OFF- ON	60 SEC
		ON - ON	120 SEC
4	SLOW SPEED	OFF	NAI / YES
		ON	OXI / NO
5	/ BRAKE	OFF	NAI / YES
		ON	OXI / NO
6	BUTTON	OFF	OPEN -STOP -CLOSE-STOP
		ON	MONO OPEN / ONLY OPEN
7	SLOW START	OFF	OXI / NO
		ON	NAI / YES
8	CABLE REVERT	OFF	OXI / NO
		ON	NAI / YES



DECLARATION OF CONFORMITY

AUTOTECH - G .KAPSALIS
 8, Archimidous str. 12134 Peristeri Athens,
 Greece, Tel: +302105780019, Fax: +302105785112
In accordance with the following directives:

- Radio & Telecommunications Terminal Equipment directive 1999/5/EC
- EN60950
- EN301489-1
- EN301489-3
- EN300220-3



hereby declare that:

Product : S5070 Electronic Control Board for Opening Doors
 Model : S5060

is in conformity with the applicable requirements of the following documents.

I hereby declare that the equipment named above has been designed to comply with the relevant sections of the above referenced specifications. The unit complies with all the applicable essential requirements of the directives mentioned.

Name: Apergis Antonios
 Position: Technical Director
 Peristeri, 28 November 2013

